

Newsletter

JOHN LANT & PARTNERS OSTEOPATHS

206 CHESTERTON ROAD CAMBRIDGE CB4 1NE

Tel: 01223 367661 (3 lines) Fax: 01223 303344 www.johnlant.co.uk admin@johnlant.co.uk

BUPA Provider No: 30000056 AXA PPP: JL00210 NHS: HSC 1998/139



This Practice, established for over 30 years offers an osteopathic service, focusing its work on the diagnosis, treatment and prevention of neuro-musculo-skeletal disorders.

The Practice, situated opposite the Chesterton Medical Centre, Cambridge Nursing Home and Elizabeth House, has a patient list of all ages, in excess of 27,000.

It offers a comprehensive range of osteopathic services by male and female osteopaths, from well equipped, computerised and fully staffed premises. All professional practice services are provided on the ground floor with good access for the elderly and disabled with a waiting area overlooking the garden and a safe childrens' area.

Of the 6,500 patients of all ages who visited the practice

Patients presenting with back pain episodes on average required 3.25 visits and 14.9 patients are unable to work. Of those complaining of back pain these diagnoses were made:

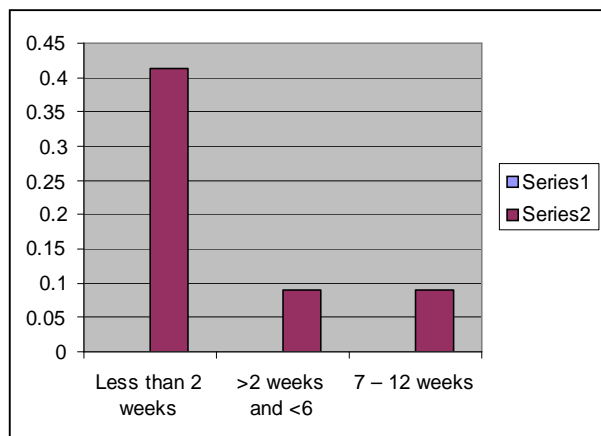
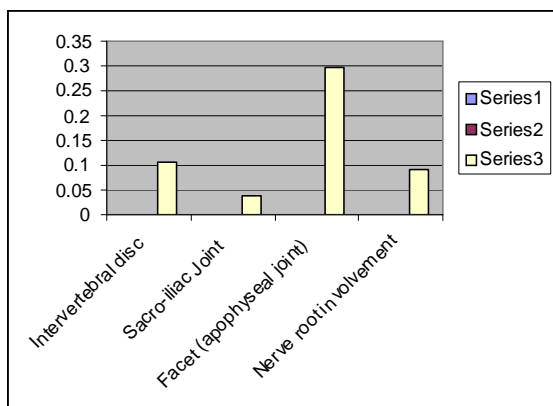
Intervertebral disc	10.5%
Sacro-iliac Joint	3.8%
Facet (apophyseal joint)	29.7%
Nerve root involvement	9.1%

A typical duration of symptoms before visiting the practice is:

Less than 2 weeks	41.4%
>2 weeks & <6	25.3%
7 - 12 weeks	9.1%

[Source: Audit at John Lant & Partners]

We offer full disabled access and toilet facilities for those with mobility problems and concessionary fees can be offered.



Professional Fees in the group practice are reduced for our services in 23% of cases.

WHAT IS OSTEOPATHY?

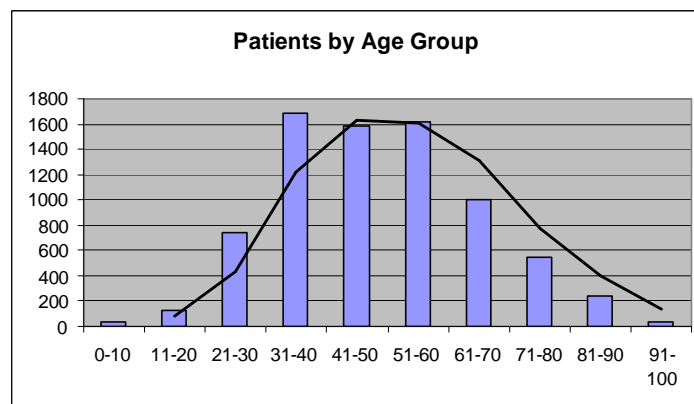
Osteopathy focuses on the diagnosis, treatment and prevention of musculo-skeletal disorders.

Using many of the diagnostic procedures applied in conventional medical assessment, osteopaths seek to restore the optimal functioning of the body and aid its ability to heal without the use of drugs or surgery.

Having carried out an extensive evaluation of individual patient needs, treatment is based on mobilising and manipulative techniques, reinforced by guidance on diet and exercise.

A wide range of musculo-skeletal disorders including back and neck pain, headaches, frozen shoulder, whiplash and sports and work-related injuries respond especially well to osteopathic treatment.

To find out more about our practice services and clinical audit, visit our web site at www.johnlant.co.uk, or telephone us on 01223 367661. If you would like a further supply of our 2004 Practice Leaflets (enclosed) outlining our services, do give us a call on Cambridge 367661.



Back Care Evenings 2004

The next back care evening as part of our regular series will be held on September 30th 2004 at the practice.

