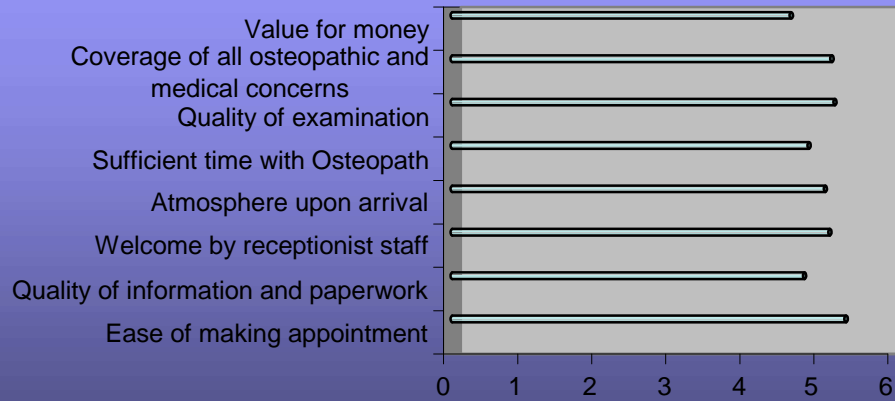
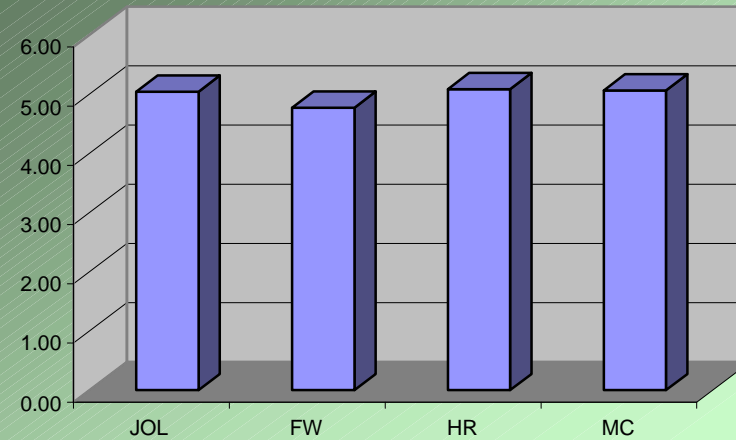


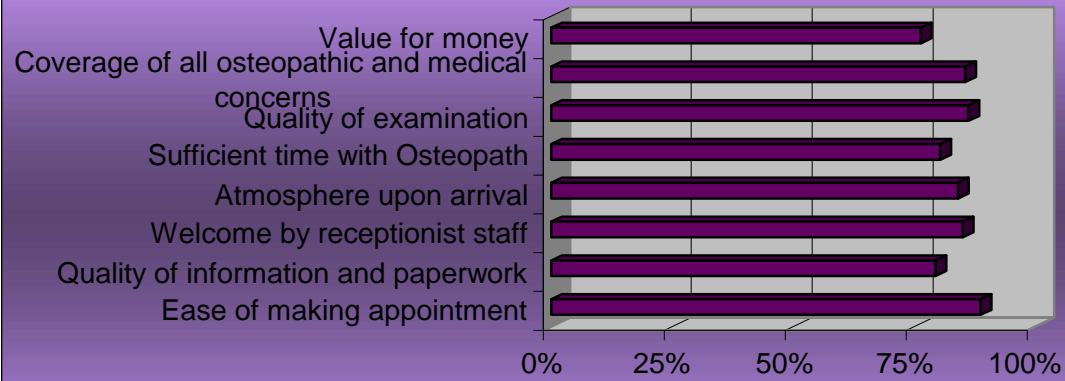
Patient Survey Summary June 2004
Mean KPI Rating 4.99 (83.17%)
[83.87 June 2003]



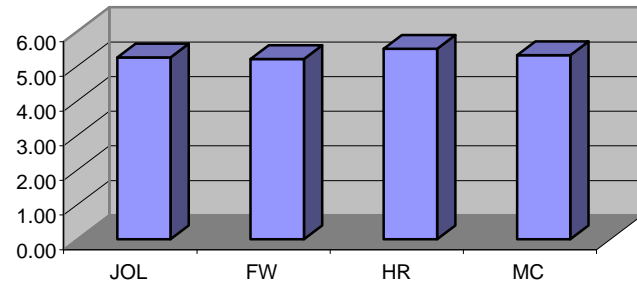
Overall Osteopath Mean KPI Values (1-6)
Overall 4.99, or 83.16%



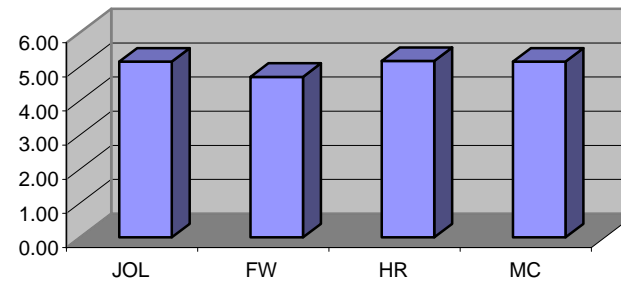
Patient Survey Summary June 2004
Mean KPI % Rating 4.99 (83.17%) [83.87 June 2003]



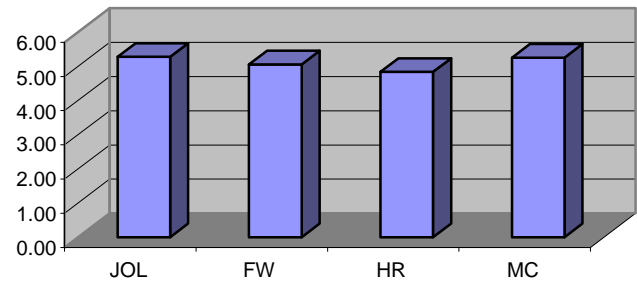
Ease of Making an Appointment



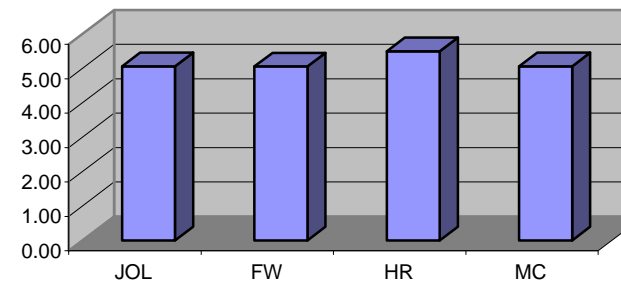
Atmosphere on Arrival



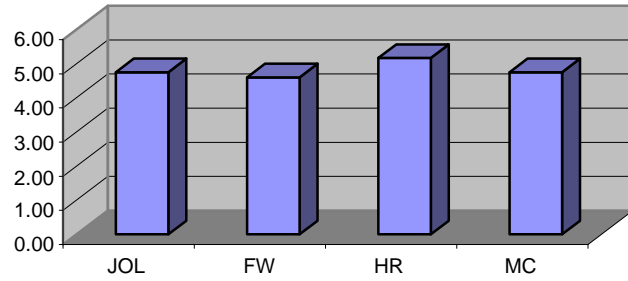
Welcome by Reception



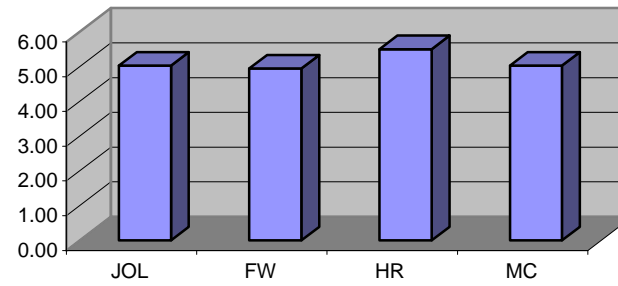
Quality of Examination



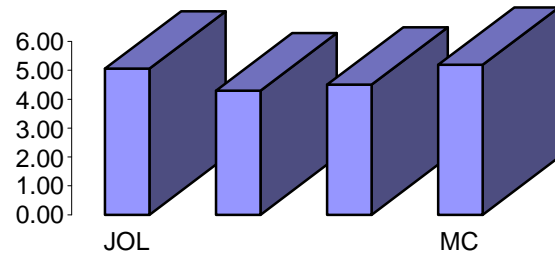
Sufficient Time with Osteopath



Coverage of Osteopathic Topics



Quality of Information and Paperwork



Value for Money

